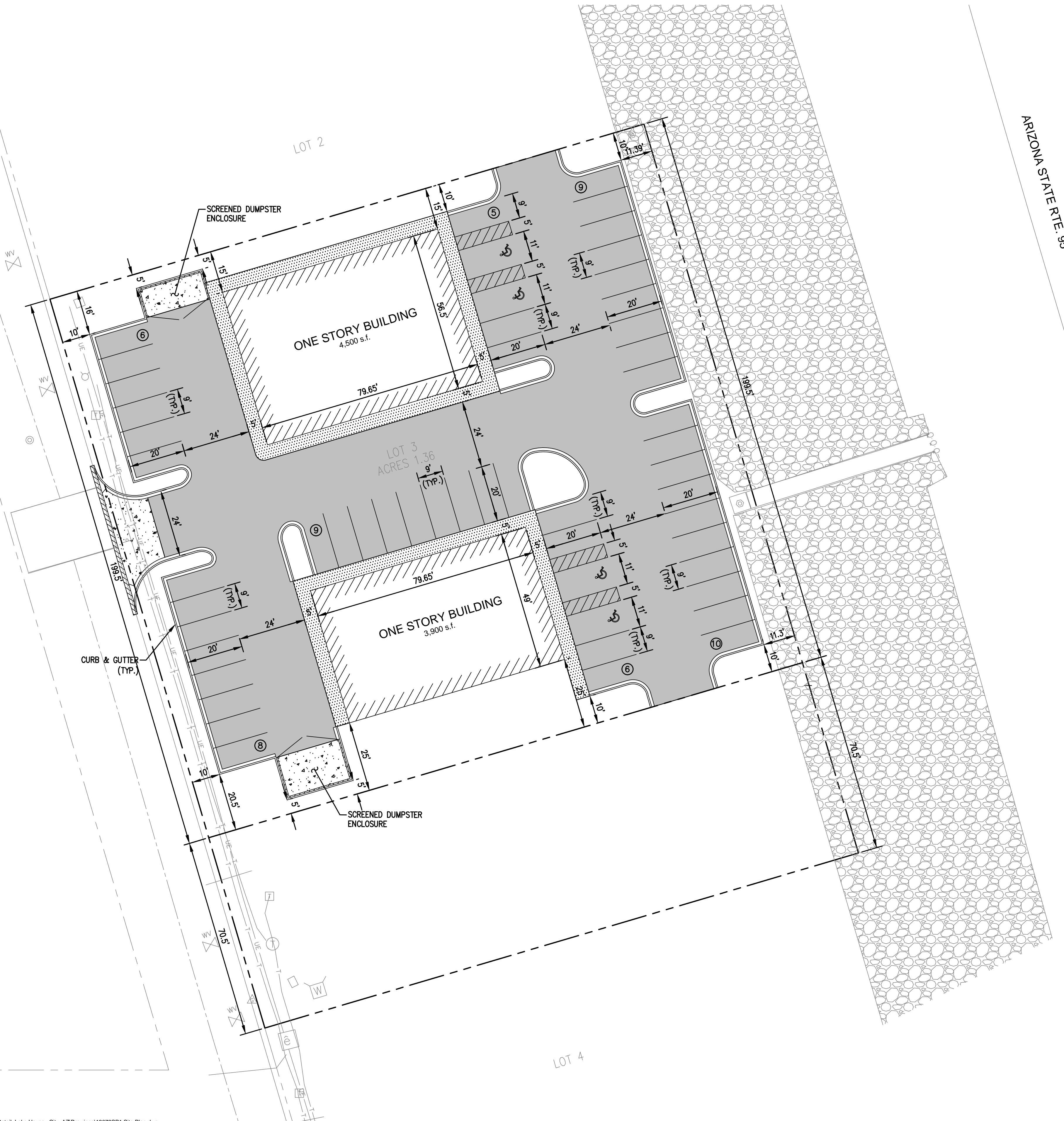


VICINITY MAP
N.T.S.




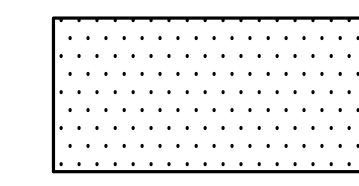
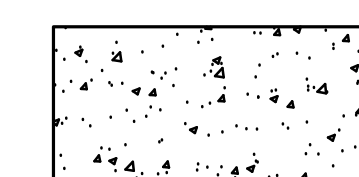
SITE DATA

Zoning: C2-PD (Commercial Planned Development)
 Site Area: 1.36 Acres
 Proposed Building #1: 4,500 S.F. (Mattress Sales)
 Proposed Building #2: 3,900 S.F. (Retail)

Parking:
 Building #1: 2 / 1,000 S.F. of G.F.A.
 Building #2: 4 / 1,000 S.F. of G.F.A.
 25 Parking Spaces Required
 53 Parking Spaces Provided
 (Including 4 Accessible Parking Spaces)

Setbacks:
 Front Yard: 0'-0"
 Side Yard: 0'-0"
 Rear Yard: 0'-0"
 Buildings Front on Arizona State Rte. 95

SURFACE LEGEND

-  ASPHALT PAVEMENT
-  CONCRETE SIDEWALK
-  CONCRETE PAVEMENT

Larson Engineering, Inc.
 1488 Bond Street, Suite 100
 Naperville, IL 60563-6503
 630.357.0540 (f) 630.357.0164
 www.larsonengr.com
 ILLINOIS LICENSE NO. 184-001442
 © 2013 Larson Engineering, Inc. All rights reserved.

Client:
QUATTRO DEVELOPMENT, LLC
 1100 JORIE BOULEVARD, SUITE 238
 OAK BROOK, IL 60523

Project Title:
PROPOSED RETAIL DEVELOPMENT
 LOT 3 OF SHOPS AT LAKE HAVASU CITY
 LAKE HAVASU CITY, AZ

Seal:
 Date: October 18, 2013
 Expires: March 31, 2015

Rev.	Date	Description

Project #: 22130072.000
 Drawn By: BJD
 Checked By: CMS
 Issue Date: 10.18.13
 Sheet Title:

SITE PLAN

SP1.0
 Sheet: 1 of 1