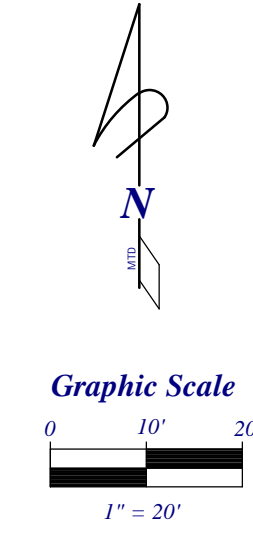
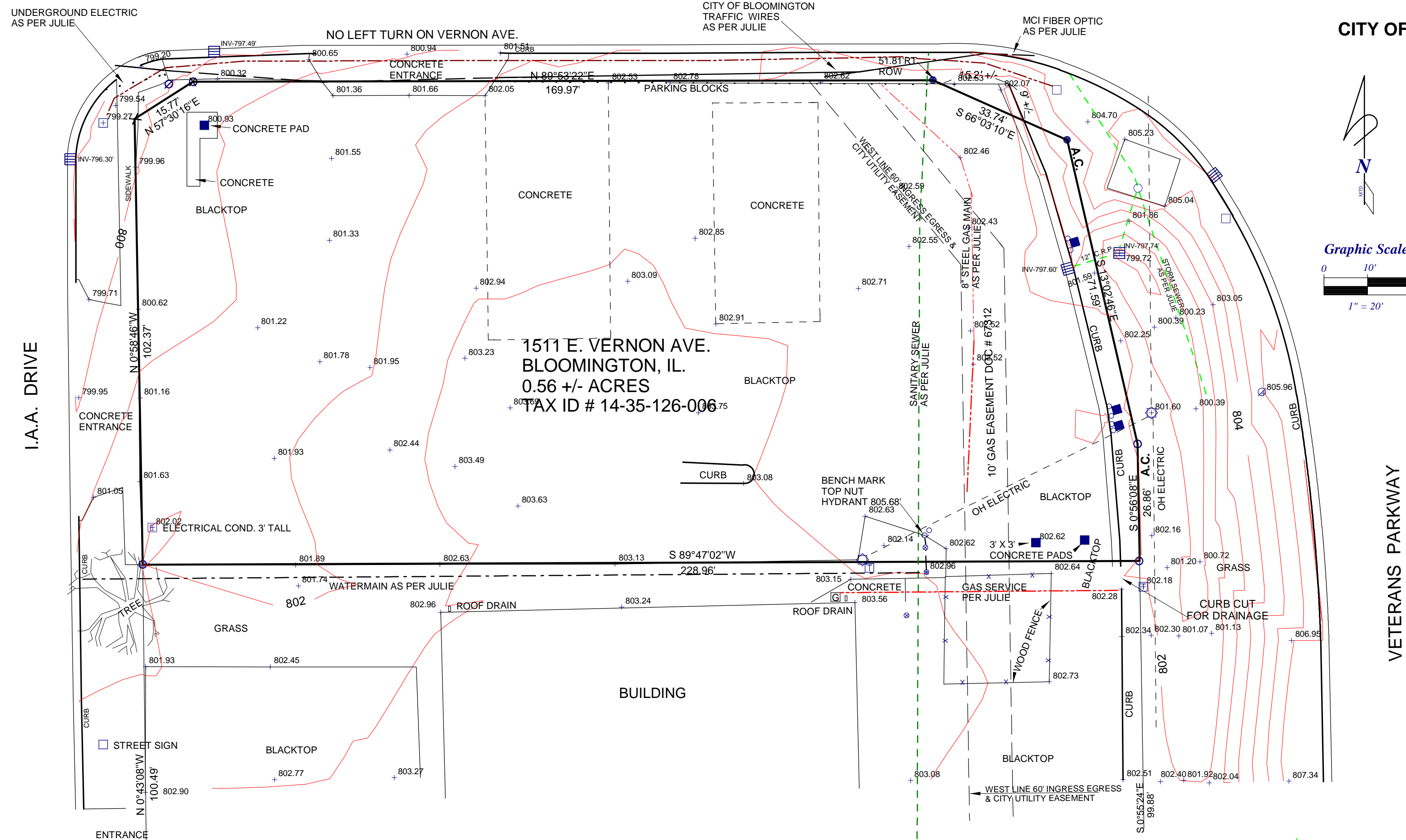


VERNON AVENUE

TOPOGRAPHIC SURVEY
IN THE NW 1/4 SECTION 35
TOWNSHIP 24 NORTH, RANGE 2 EAST,
3rd PRINCIPAL MERIDIAN
CITY OF BLOOMINGTON, Mc LEAN COUNTY, IL



- 3' x 3' TRAFFIC SIGNAL VAULT
- STORM INLET
- ABANDONED PAY PHONE AREA
- MANHOLE
- TESTING SERVICE CORP. PURPOSED BORES
- PHONE BOX
- POWER POLE
- A.C. ACCESS CONTROL NO ACCESS TO VETERANS PARKWAY
- GAS METER
-
-
- CUT X IN CONCRETE
- FOUND P.K. NAIL
- TRAFFIC SIGNAL

- GENERAL NOTES:
1. UTILITIES LOCATION BY J.U.L.I.E. AS SHOWN HEREON.
 2. JULIE ORDERED BY TESTING SERVICES CORP FOR SOIL BORES DIG # X001320293.
 3. UNDERGROUND UTILITIES SHOULD BE FIELD VERIFIED PRIOR TO ANY EXCAVATION.
 4. BEARING ARE ASSUMED FOR THE PURPOSE OF DESCRIPTION ONLY.
 5. ELEVATION FROM FEMA MAP NUMBER 17113C0314 D, FEB. 9, 2001 REFERENCE MARK RM 314-4 CHISELED SQUARE CENTERLINE EAST CONCRETE RAIL TOWANDA AVE.

SURVEYOR'S CERTIFICATE

WE, A.J. DOWIATT, INC., PROFESSIONAL LAND SURVEYORS, DO HEREBY CERTIFY THAT WE HAVE PREPARED THIS TOPOGRAPHIC SURVEY AS DIRECTED BY QUATTRO DEVELOPMENT SERVICES L.L.C. AS SHOWN HEREON. BEING A PART OF THE NORTHWEST 1/4 OF SECTION 35, TOWNSHIP 24 NORTH, RANGE 2 EAST, 3rd P.M. Mc LEAN COUNTY, IL. THE RESULTS OF THIS SURVEY REFLECT OUR OPINION THAT THE INFORMATION SHOWN HEREON IS TRUE AND CORRECT TO THE BEST OF OUR KNOWLEDGE, INFORMATION AND BELIEF. IN OUR OPINION THE LAND SHOWN HEREON LIES WITHIN ZONE X AS SHOWN ON COMMUNITY PANEL 17113C0314E EFFECTIVE DATE JULY 16, 2008 OF THE FEDERAL INSURANCE RATE MAP PREPARED BY THE FEDERAL EMERGENCY MANAGEMENT AGENCY, AND THAT THE LAND SHOWN HEREON DOES LIE WITHIN THE CITY OF BLOOMINGTON, ILLINOIS HAVING AN APPROVED AND ADOPTED COMPREHENSIVE PLAN. THIS PROFESSIONAL SERVICE CONFORMS TO CURRENT ILLINOIS MINIMUM STANDARDS FOR A BOUNDARY AND TOPOGRAPHIC SURVEY. THIS DOCUMENT IS NOT VALID WITHOUT THE ORIGINAL SIGNATURE AND SEAL OF THE PROFESSIONAL LAND SURVEYOR.

DATED THIS _____ DAY OF _____, 2010.
A.J. DOWIATT INC.

ILLINOIS PROFESSIONAL LAND SURVEYOR
LICENSE RENEWAL NOV. 30th 2010.

A.J. Dowiatt Inc.		121 West Center Street	
Land Surveyors & Engineers		Eureka, Illinois 61530	
License # 184-002926		Phone (309) 467-6014 Fax (309) 467-4042	
TOPOGRAPHIC SURVEY IN THE NW 1/4 SECTION 35 TOWNSHIP 24 NORTH, RANGE 2 EAST, 3rd PRINCIPAL MERIDIAN CITY OF BLOOMINGTON, Mc LEAN COUNTY, IL		Survey	MTD/SLW
		Drawn	MTD
		Date	5/14/10
		FIELD WK COMPLETED	5/14/10
Revised		File #	10-43C